

WaFilter

【無憂無氯】

Chlorine Free Shower Filters 1+1



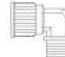
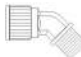
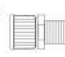


Far Infra-red ceramic ball
Calcium sulfite filter media inside

Installation Manual



Accessories & Parts :

Please check the package with below accessories once received the products, however, some parts are not included, and are required to add on prices, kindly note!

The shower filter body x1		The shower filter replacement cartridge x1	
feed water connector x1 (one of them)	90 angle 	45 angle 	180 angle 
water outlet connector x1 (one of them)	90 angle 	180 angle 	

Specification :

Features	Easy installation, quick change replacement cartridge design
Country of origin	TAIWAN
Filter Lifetime	20,000 liters (based on feed water quality chlorine less than 1ppm)
Working Pressure	0.7~5kgf/cm ²
Working Temperature	10-55℃
Filter Media	Far Infra-red ceramic ball and Calcium sulfite
Net Weight	About 450 gram
Validity period	1.5 year

WaFilter

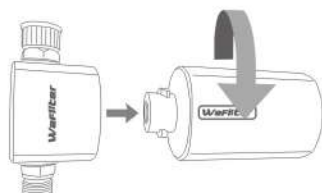
Chlorine Free Shower Filters 1+1

Accessories & Parts installation instruction :



Filter Replacement instructionl :

Turn counter-clockwise to remove the filter cartridge, and replace with a new filter cartridge.

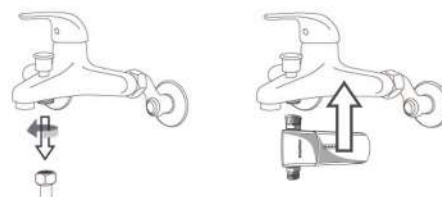


Attention :

The lifetime of the cartridge is based on the tapwater quality chlorine less than 1ppm, the period will be changed depends on its water quality and water volume. Suggested to test the water quality by water tester paper after 3-6 months, if it shows yellow color, please replace with a new one.

Installation Instruction :

1.Remove the nut from the tap end and then screw the feed water connector into the tap



2.Connect the shower filter one end to the tap, and the other end to the water pipe.



3.Screw tightly and its finished.

